



DSRIP Project 1.6

Increasing Well Child Exams

Region 15 RHP Meeting

El Paso First Healthplan, 1145 Westmoreland Drive

Maria Theresa M. Villanos, MD

July 29, 2016

Introduction

- ✧ Completion of nationally recommended preventive pediatric health care (Periodicity) examinations in our population is challenging at all age ranges, and particularly after the 12 month visit.
- ✧ A number of reasons may contribute to this
 - ✧ Parental perceptions that “everything is all right”
 - ✧ Transportation challenges
 - ✧ The need to take off work and remove the child from school or day care
 - ✧ Parental perceptions that the health maintenance examinations of older children are not important and not worth the time



Introduction

- ✧ The populations we most commonly serve are at particular risk of not receiving health maintenance exams
- ✧ Eighty-nine percent of the patients we treat in our after-hours acute care walk in clinic are uninsured, or have Medicaid or CHIP as a payor.



Description of the Project

- ✧ Expansion of pediatric primary care by providing health periodicity exams in conjunction with a visit to an acute care walk in clinic to eligible patients and their siblings



Well Child Exams in Acute Care Clinic

- ✧ Goal: To increase the number of children who receive appropriate health periodicity exams as defined by the American Academy of Pediatrics Bright Futures Recommendations and are current in their immunization status.



Well Child Exams in Acute Care Clinic

- ✧ Utilize a “just in time” delivery model to offer periodic health exams visit to all eligible children in the family of an index patient who presents to the walk in clinic.
- ✧ We do not intend to replace the traditional provider – patient relationship where one exists and the parent is regularly accessing preventative care.



Well Child Exams in Acute Care Clinic

- ✧ We are identifying children who have fallen off the recommended pathway, are not receiving services they are eligible for, and use the acute care visit as opportunity to both provide the screening examination and try to reestablish the patient with a Primary Care Provider for subsequent exams.
- ✧ Re-establishing such a relationship may result in the child receiving future recommended periodicity exams and also reduced use of acute care services in the future.





Well Child Exams in Acute Care Clinic

DY4-Encounters-Acute Care Well Child Visit Goal-1500

Encounters(Well Child Exams)

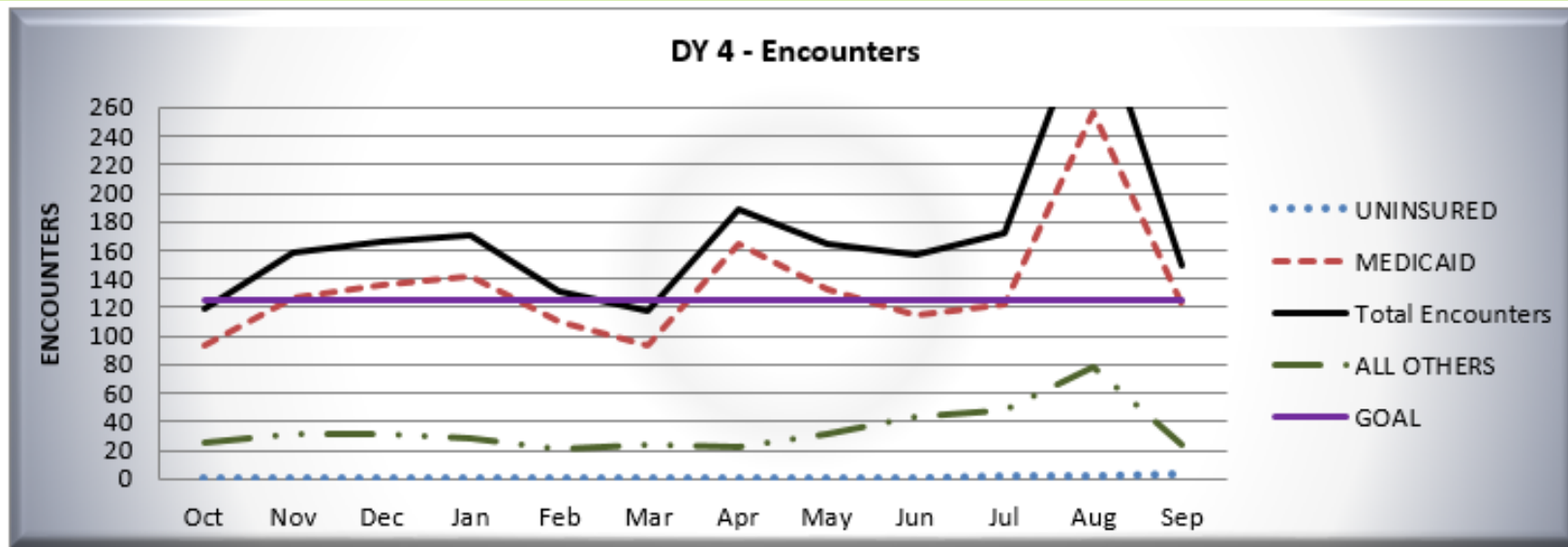
Reporting Period: DY 4- October 2014 to September 2015

Departments

ALBERTA EXTENDED HOURS
E/PEDI WALK IN BLUE POD
E/PEDI MWC EVENING

	Oct	Nov	Dec	Jan	Feb	Mar	Apr	May	Jun	Jul	Aug	Sep	Total
UNINSURED	0	0	0	0	0	0	1	0	0	2	2	3	8
MEDICAID	94	127	135	142	110	93	165	133	114	122	257	122	1614
ALL OTHERS	25	31	31	29	21	24	23	31	43	48	78	24	408
Total Encounters	119	158	166	171	131	117	189	164	157	172	337	149	2030
% Uninsured	0%	0%	0%	0%	0%	0%	1%	0%	0%	1%	1%	2%	0%
% Medicaid	79%	80%	81%	83%	84%	79%	87%	81%	73%	71%	76%	82%	80%

1500 Y
125 M



DY5-Encounters-Acute Care Well Child Visit

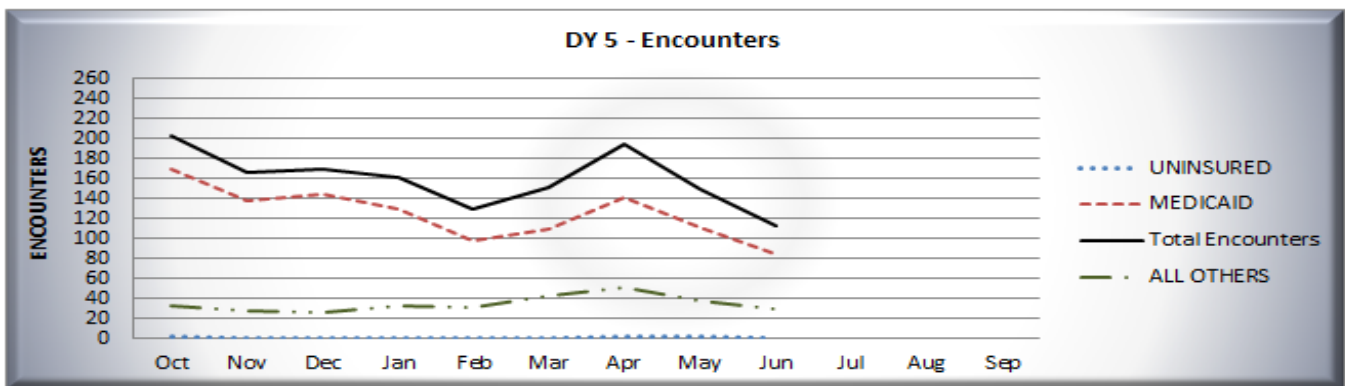
Goal-1700



084597603.1.6

er 2015 to September 2016

	Oct	Nov	Dec	Jan	Feb	Mar	Apr	May	Jun	Jul	Aug	Sep	Total
UNINSURED	2	0	0	0	0	0	2	1	0				5
MEDICAID	169	138	144	129	98	109	141	111	84				1123
ALL OTHERS	32	28	26	32	31	42	51	38	29				309
Total Encounters	203	166	170	161	129	151	194	150	113				1437
% Uninsured	1%	0%	0%	0%	0%	0%	1%	1%	0%	#DIV/0!	#DIV/0!	#DIV/0!	0%
% Medicaid	83%	83%	85%	80%	76%	72%	73%	74%	74%	#DIV/0!	#DIV/0!	#DIV/0!	78%



DY4-unique- Acute Care Well Child Visit Goal-1600

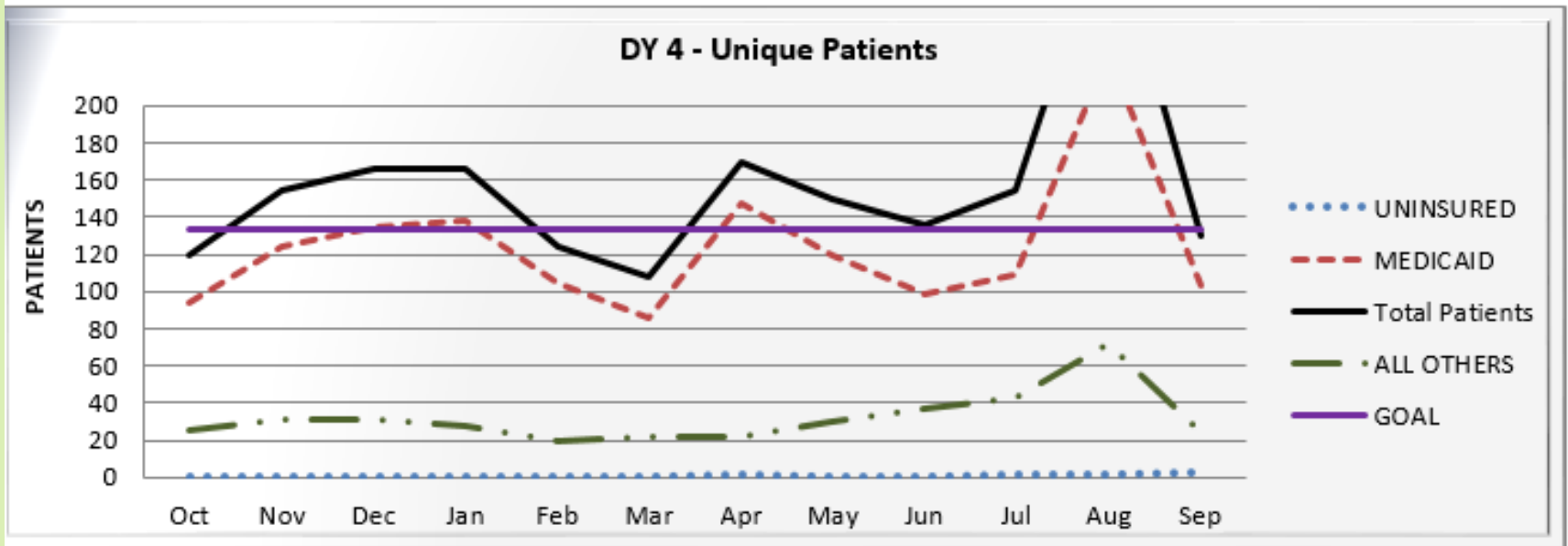
Unique Patients Served who received a well child exam in the acute care clinic

Reporting Period: DY 4- October 2014 to September 2015

Departments

ALBERTA EXTENDED HOURS
E/PEDI WALK IN BLUE POD
E/PEDI MWC EVENING

DSRIP GROUPING	Oct	Nov	Dec	Jan	Feb	Mar	Apr	May	Jun	Jul	Aug	Sep	Total	
UNINSURED	0	0	0	0	0	0	1	0	0	2	2	3	8	
MEDICAID	94	124	135	138	104	86	147	120	99	109	228	103	1487	
ALL OTHERS	25	31	31	28	20	22	22	30	37	43	72	24	385	
Total Patients	119	155	166	166	124	108	170	150	136	154	302	130	1880	1600 Y
% Uninsured	0%	0%	0%	0%	0%	0%	1%	0%	0%	1%	1%	2%	0%	133 M
% Medicaid	79%	80%	81%	83%	84%	80%	86%	80%	73%	71%	75%	79%	79%	



DY5-Unique-Acute Care Well Child Visit Goal-1750

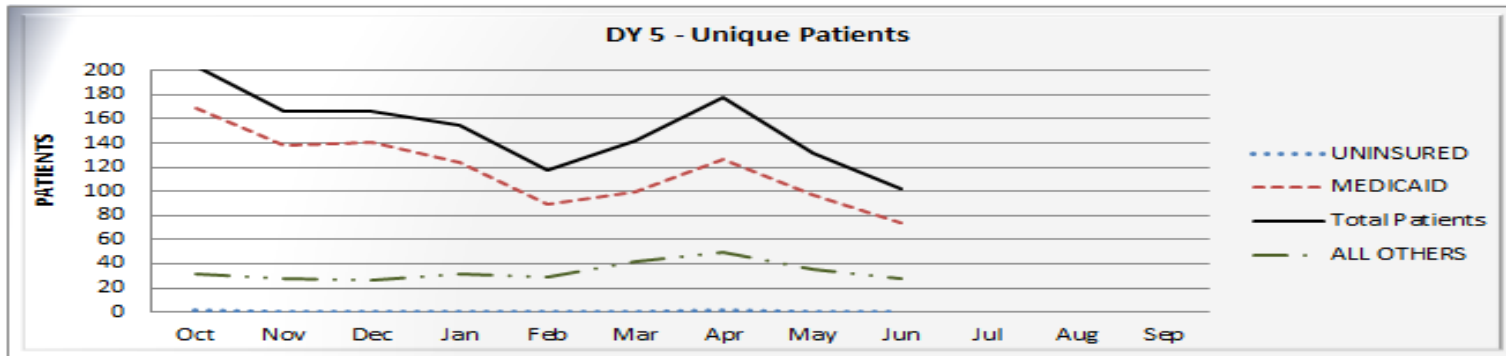


084597603.1.6

received a well child exam in the acute care clinic

er 2015 to September 2016

DSRIP GROUPING	Oct	Nov	Dec	Jan	Feb	Mar	Apr	May	Jun	Jul	Aug	Sep	Total
UNINSURED	2	0	0	0	0	0	2	0	0				4
MEDICAID	169	138	140	124	89	100	127	97	74				1058
ALL OTHERS	32	28	26	31	29	42	49	35	28				300
Total Patients	203	166	166	155	118	142	178	132	102				1362
% Uninsured	1%	0%	0%	0%	0%	0%	1%	0%	0%	#DIV/0!	#DIV/0!	#DIV/0!	0%
% Medicaid	83%	83%	84%	80%	75%	70%	71%	73%	73%	#DIV/0!	#DIV/0!	#DIV/0!	78%





Well Child Exams 0-15 months

DY4-0-15 months

Goal: 65.15%

DSRIP Project: 084597603.1.6
 IT-8.21: Well Child Visits in the First 15 Months of Life
 Pediatrics
 Category 3.8

Reporting Period: October 2014 to September 2015
Identifiers: Patients in the Pediatrics Clinic
 Patient who Turn 15 Months of Age During the DY
 Patients Who Received At Least 6 Well Child Exams

Unique Patients Served 0-15 Months who Received at least 6 well child Exams

Reporting Period: DY 4- October 2014 to September 2015

Super Department Year
 EL PASO Pediatrics DY2014 DY 4 *** CHIP PATIENTS WERE INCLUDED ON THE ALL OTHERS CATEGORY**

Age Category	DSRIPGROUPING	Numerator Qualifier	Oct	Nov	Dec	Jan	Feb	Mar	Apr	May	Jun	Jul	Aug	Sep	Total
15 Months	*ALL OTHERS	Patient had 6 or MORE Well Child Exams	0	4	4	3	3	1	6	2	1	2	1	3	30
15 Months	MEDICAID	Patient had 6 or MORE Well Child Exams	21	10	17	17	13	14	11	10	7	7	15	6	148
15 Months	UNINSURED	Patient had 6 or MORE Well Child Exams	0	0	0	0	0	0	0	0	0	0	0	0	0
15 Months	*ALL OTHERS	Patient had LESS than 6 Well Child Exams	3	3	0	2	3	6	5	2	2	1	2	3	32
15 Months	MEDICAID	Patient had LESS than 6 Well Child Exams	6	9	6	3	9	5	3	9	4	8	5	13	80
15 Months	UNINSURED	Patient had LESS than 6 Well Child Exams	0	0	0	0	0	0	0	0	0	0	0	0	0
Total Patiets who received at least 6 Well Child Exams			21	14	21	20	16	15	17	12	8	9	16	9	178
Total Patients 15 Months Old			30	26	27	25	28	26	25	23	14	18	23	25	290
% of Patients who received at least 6 Well Child Exams			70%	54%	78%	80%	57%	58%	68%	52%	57%	50%	70%	36%	61.38%

DY5-0-15 months

Goal-66.5%

Unique Patients Served 0-15 Months who Received at least 6 well child Exams

Reporting Period: DY 5- October 2015 to September 2016

Super Department

Year

EL PASO Pediatrics

DY2015 DY 5

* CHIP PATIENTS WERE INCLUDED ON THE ALL OTHERS CATEGORY

Age Category	DSRIPGROUPING	Numerator Qualifier	Oct	Nov	Dec	Jan	Feb	Mar	Apr	May	Jun	Jul	Aug	Sep	Total
15 Months	*ALL OTHERS	Patient had 6 or MORE Well Child Exams	3	3	2	5	7	3	2	1	1	0			27
15 Months	MEDICAID	Patient had 6 or MORE Well Child Exams	16	15	15	20	9	16	18	12	17	1			139
15 Months	UNINSURED	Patient had 6 or MORE Well Child Exams	0	0	0	0	0	0	0	0	1				1
15 Months	*ALL OTHERS	Patient had LESS than 6 Well Child Exams	3	1	4	3	3	5	6	0	5	1			31
15 Months	MEDICAID	Patient had LESS than 6 Well Child Exams	8	5	3	7	9	10	5	8	8	1			64
15 Months	UNINSURED	Patient had LESS than 6 Well Child Exams	0	0	0	0	0	0	0	0	0				0
Total Patiets who received at least 6 Well Child Exams			19	18	17	25	16	19	20	13	19	1	0	0	167
Total Patients 15 Months Old			30	24	24	35	28	34	31	21	32	3	0	0	262
% of Patients who received at least 6 Well Child Exams			63%	75%	71%	71%	57%	56%	65%	62%	59%	33%	#DIV/0!	#DIV/0!	63.74%



Well Child Exams

3-6 yrs

DY4: 3-6 years

Goal: 68.47%

Unique Patients Served 3-6 Years Old Months who Received at least 1 well child Exams
Reporting Period: DY 4- October 2014 to September 2015

Super Department EL PASO Pediatrics **Year** DY2014 DY 4 *** CHIP PATIENTS WERE INCLUDED ON THE ALL OTHERS CATEGORY**

Age Category	DSRIPGROUPING	Numerator Qualifier	Oct	Nov	Dec	Jan	Feb	Mar	Apr	May	Jun	Jul	Aug	Sep	Total
Patients 3 to 6	*ALL OTHERS	Patient did not receive a Well Child Exam	66	49	30	37	30	33	23	27	29	25	12	39	400
Patients 3 to 6	MEDICAID	Patient did not receive a Well Child Exam	142	69	57	60	47	32	43	24	29	18	24	34	579
Patients 3 to 6	UNINSURED	Patient did not receive a Well Child Exam	0	0	0	0	0	0	1	0	0	0	0	1	2
Patients 3 to 6	*ALL OTHERS	Patient Received at Least 1 Well Child Exam	71	47	21	35	23	22	21	17	20	13	16	7	313
Patients 3 to 6	MEDICAID	Patient Received at Least 1 Well Child Exam	549	281	195	258	184	151	128	84	101	94	148	86	2259
Patients 3 to 6	UNINSURED	Patient Received at Least 1 Well Child Exam	0	0	0	0	0	0	0	0	0	0	0	2	2
Total Patients who received at least 1 Well Child Exams			620	328	216	293	207	173	149	101	121	107	164	95	2574
Total Patients 3-6 Years Old			828	446	303	390	284	238	216	152	179	150	200	169	3555
% of Patients who received at least 1 Well Child Exam			75%	74%	71%	75%	73%	73%	69%	66%	68%	71%	82%	56%	72.41%

DY5:3-6 years

Goal: 70%

Unique Patients Served 3-6 Years Old Months who Received at least 1 well child Exams

Reporting Period: DY 5- October 2015 to September 2016

Super Department

Year

EL PASO Pediatrics

DY2015 DY 5

* CHIP PATIENTS WERE INCLUDED ON THE ALL OTHERS CATEGORY

Age Category	DSRIPGROUPING	Numerator Qualifier	Oct	Nov	Dec	Jan	Feb	Mar	Apr	May	Jun	Jul	Aug	Sep	Total
Patients 3 to 6	*ALL OTHERS	Patient did not receive a Well Child Exam	216	43	22	24	33	21	23	26	33				441
Patients 3 to 6	MEDICAID	Patient did not receive a Well Child Exam	372	58	50	46	66	39	35	30	32				728
Patients 3 to 6	UNINSURED	Patient did not receive a Well Child Exam	1	0	1	1	0	0	0	0	0				3
Patients 3 to 6	*ALL OTHERS	Patient Received at Least 1 Well Child Exam	108	22	20	17	35	26	26	24	17				295
Patients 3 to 6	MEDICAID	Patient Received at Least 1 Well Child Exam	755	138	141	161	144	126	128	131	77				1801
Patients 3 to 6	UNINSURED	Patient Received at Least 1 Well Child Exam	3	0	0	0	1	0	0	0	0				4
Total Patients who received at least 1 Well Child Exams			866	160	161	178	180	152	154	155	94	0	0	0	2100
Total Patients 3-6 Years Old			1455	261	234	249	279	212	212	211	159	0	0	0	3272
% of Patients who received at least 1 Well Child Exam			60%	61%	69%	71%	65%	72%	73%	73%	59%	#DIV/0!	#DIV/0!	#DIV/0!	64.18%



Well Child Exams 12-21 yrs (Adolescents)

DY4:12-21years old

Goal: 61.21%

Unique Patients Served 12-21 Years Old Months who Received at least 1 Well-Care Visit

Reporting Period: DY 4- October 2014 to September 2015

Super Department

Year

EL PASO Pediatrics

DY2014 DY 4

*** CHIP PATIENTS WERE INCLUDED ON THE ALL OTHERS CATEGORY**

Age Category	DSRIPGROUPING	Numerator Qualifier	Oct	Nov	Dec	Jan	Feb	Mar	Apr	May	Jun	Jul	Aug	Sep	Total
Patients 12-21	*ALL OTHERS	Patient did not receive a Well-Care Visit	169	112	87	108	72	72	77	62	45	47	53	65	969
Patients 12-21	MEDICAID	Patient did not receive a Well-Care Visit	244	121	109	132	112	85	88	58	45	61	56	83	1194
Patients 12-21	UNINSURED	Patient did not receive a Well-Care Visit	6	4	3	1	4	1	1	3	1	2	2	1	29
Patients 12-21	*ALL OTHERS	Patient Received at Least 1 Well-Care Visit	116	69	40	59	46	59	34	28	43	56	73	24	647
Patients 12-21	MEDICAID	Patient Received at Least 1 Well-Care Visit	540	316	219	318	239	226	171	154	169	160	235	95	2842
Patients 12-21	UNINSURED	Patient Received at Least 1 Well-Care Visit	0	2	1	0	1	1	1	0	0	2	3	0	11
Total Patients who received at least 1 Well-Care Visit			656	387	260	377	286	286	206	182	212	218	311	119	3500
Total Patients 12-21 years old			1075	624	459	618	474	444	372	305	303	328	422	268	5692
% of Patients who received a Well-Care Visit			61%	62%	57%	61%	60%	64%	55%	60%	70%	66%	74%	44%	61.49%



Quality Improvements (CQI)

- Innovations
 - Health fair
 - Robocalls to remind Well Child exam due; postcard/refrigerator magnets/business card-schedule of Well child exams
- Rapid Cycle Improvements
 - PDSA's

THANK YOU!